

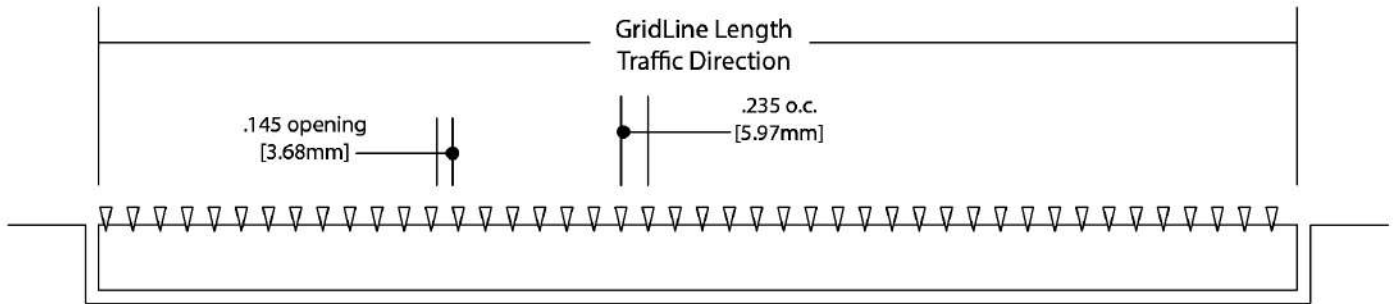


# Entrance Flooring

TWF and Building Components Corp.

## Technical Data:

- \* **Product Depth & weight:**  
     **9/8" (28.6mm)- 5.4 lbs./sq.ft.**  
     **5/8" (15.9mm)- 3.8 lbs./sq. ft.**
- \* **0.235" (5.97mm) Wire spacing.**
- \* **Type 304 Stainless steel**
- \* **Hidden mounted lockdowns**
- \* **1000lbs./per wheel rolling load capacity**
- \* **2 year limited warranty**



## Stainless steel Entrance Flooring Specifications

### Model: CS1101P

#### 1.Manufacturers

A.Drawings and specifications are based on manufacturer's literature unless otherwise indicated.

#### 2.Materials

A.Stainless Steel- Type 304 Stainless steel for surface wires and support bars.

#### 3.Floor Grids

##### A.Model and Description

CS1101P Entrance Grids shall be manufactured from type 304 Stainless Steel in 9/8"(28.6mm) or 5/8" (15.9mm) depth. Wires to be

0.09" (2.28mm)x 0.15"(3.81mm) electronically welded and spaced 0.145" (3.68mm) apart.

B.Unit must withstand 1000 lb./wheel loads (load applied to a solid 5" x 2" wide polyurethane wheel, 1000 passes without damage.

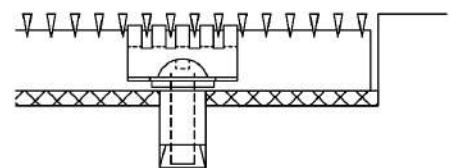
#### 4.Grid Frames

A. CS1101P Entrance mats shall be manufactured w/ or w/o frame, if with frame, it shall be made from type 304 Stainless Steel in 0.098"(2.5mm) width x 9/8"(28.6mm) or 5/8" (15.9mm) depth.

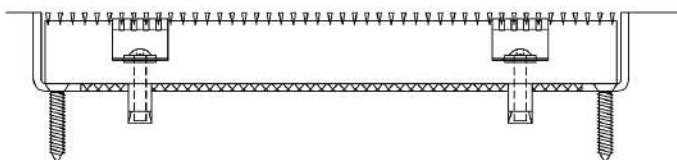
#### 5.Lock Down Mechanism

A. Hidden Lock Down shall be a hidden device to secure the Grilles to the concrete surface. Made from Type 304.

Below is an example of a Hidden Lock Down.



Level Base Frame with Optional Drain Pan



TWF and Building Components

**TWF and Building Components Corporation**

#394 A-Buencamino St. San Miguel Manila, Philippines  
Mobile No. +63 917 1030733; +63 917 8454197; 02 87429366 loc.115-116  
Website: [www.twfcorp.com.ph](http://www.twfcorp.com.ph)